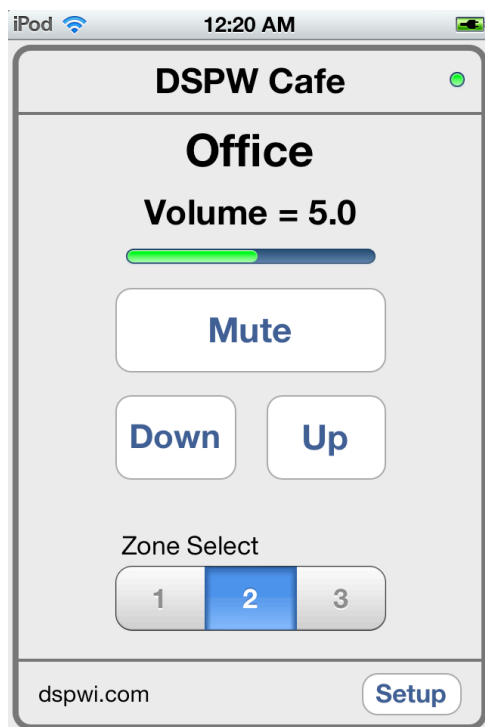




DSP Wireless Inc.

SA-232D User Guide v1.0

SA-232D



SA-232D User guide.

SA-232D App Description -

The SA-232D iOS App is a 1-Control, 3-Zone User Interface App for the control of a Stewart Audio AV25-2-RS232 Amplifier. SA-232D is optimized for the iPhone or iPod iTouch screen size. It will also run on the iPad in 2x mode.

SA-232D setup assumes familiarity with setting up IP addresses and other basic network management details. The SA-232D App communicates to the AV25-2-RS232 via an Ethernet-to-RS232 adapter, often called a Device Server.

DSPW sells an Ethernet-to-RS232 adapter that is appropriate for use with the SA-232D App. It is available for purchase on the DSPW website at dspwi.com. Other Ethernet-to-RS232 adapters will work as well. We have tested successfully with the Global Cache iTach Flex WiFi unit.

The DSPW adapter has three (3) RS232 ports available on one Dsub 9 connector. This allows you to control up to 3 AV25-2-RS232 Amplifiers. For more information on how to set up your DSPW adapter see the adapter user guide.

Configure your Ethernet-to-RS232 adapter.

If using the DSPW Ethernet-to-RS232 adapter purchased from the DSPW website, you are all set. The DSPW adapter comes preconfigured to the default IP address and Port settings that are used in the SA-232D App.

If you need to make changes to the default setup -

1. Set your adapter IP number to agree with the IP number you have set in the SA-232D App.
2. Set the SA-232D Port number to agree with the Port number used on your adapter.
3. Set adapter baud rate to 9600.

If using another adapter Global Cache -

1. Set your adapter IP number to agree with the IP number you have set in the SA-232D App.
2. Set the SA-232D Port number to agree with the Port number used on your adapter. For ex. The Global Cache iFlex Wifi uses port number 4999.
3. Set adapter baud rate to 9600.

For more detailed configuration information consult the adapter setup guide. These are available on the dspw.com website.

Configure the Ethernet network.

1. Configure your Ethernet network for Wi-Fi. The SA-232D is an iOS App that communicates via Wi-Fi only.
2. Configure your iOS device to work with your Wi-Fi network. You must connect to the WiFi network that is connected to your Ethernet-to-RS232 adapter.
3. Launch the SA-232D App and set up as instructed below.

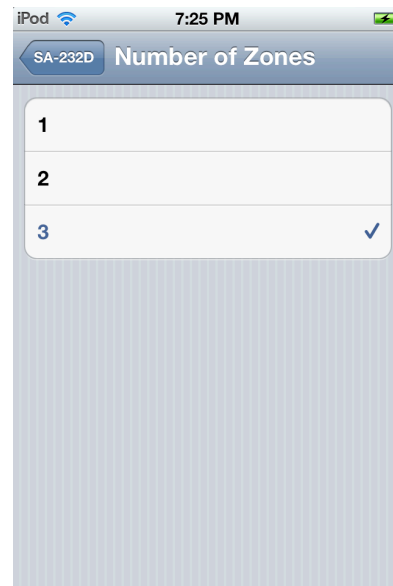
SA-232D User guide.

SA-232D App Configuration -

Apple Settings Group for SA-232D – These are accessed from the Apple® Settings Icon.

1. Background Color – select from 4 shades of gray. White, Light Gray, Gray, Dark Gray.
2. Number of Zones – select 1, 2, or 3 Zones to be displayed on the Zone Select Control
3. Hide Setup – select if Setup Button is hidden or visible. Useful if you want to restrict access to the Setup screens

Below is a Screen Shot of the SA-232D App Settings Screen on a 4th generation iPod Touch that is running iOS 5.1. This would look similar on an iPhone 4s.



SA-232D User guide.

SA-232D Home Screen.

Below are screen shots of the SA-232D App Home Screen on a 4th generation iPod Touch that is running iOS 5.1. The screen shots show how the App will look depending on how many Zones are selected in Settings. This would look similar on an iPhone 4S.



SA-232D App Home Screen UI fields.

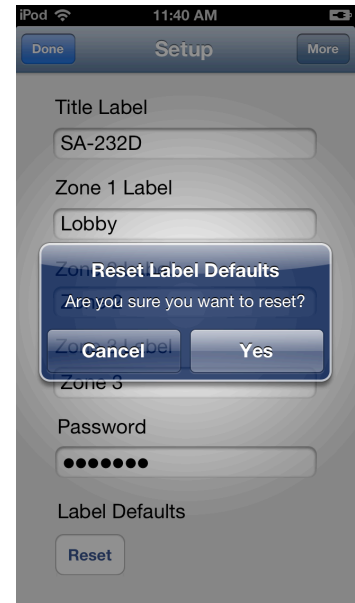
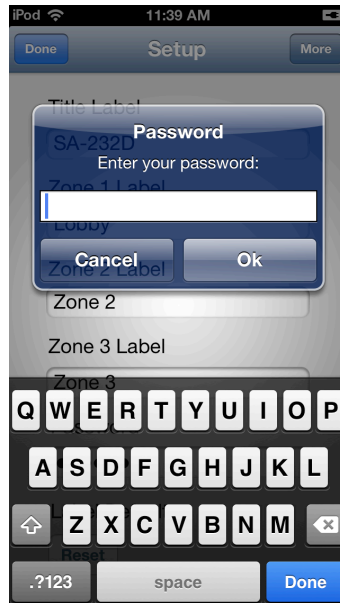
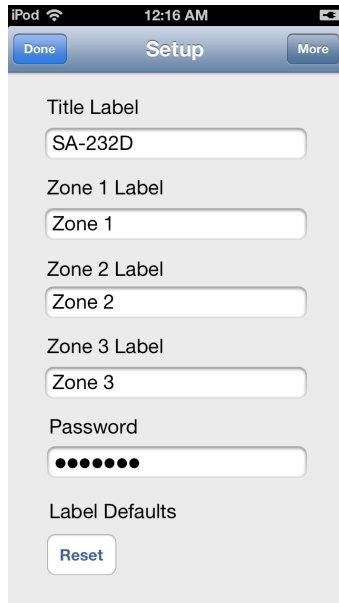
1. Title area – Use Setup Button to change.
2. Network Status LED – Green is OK, Orange if missed one message, Red if lost connection.
3. Zone Label - Use Setup Button to change.
4. Current Volume setting, Text – Will display the AV25-2 Amp volume setting.
5. Current Volume setting, Progress Bar - Green bar that indicates Volume setting or Mute status.
6. Mute button – Push to toggle Mute on / off. When Mute is on, the Progress Bar will turn Orange.
7. UP / Down buttons – Push to reduce or increase the Amp volume.
8. Zone Select control – Select the Zone you want to control.
9. Setup Button – Push to take to the Setup screen. Can be made invisible from Apple Settings for SA-232D.

Since the SA-232D is running on a Mobile or Portable device, it is possible to walk out of range of your Wi-Fi network. There is an indicator in the Upper Right Corner of the UI that indicates Green if in range and communication to the AV25-2 Amp is established. RED indicates a loss of connection.

SA-232D User guide.

Setup Screen. Displayed after pushing Setup Button.

Below are screen shots of the SA-232D App Setup Screens on a 5th generation iPod Touch that is running iOS 6.0. This would look similar on an iPhone 5.



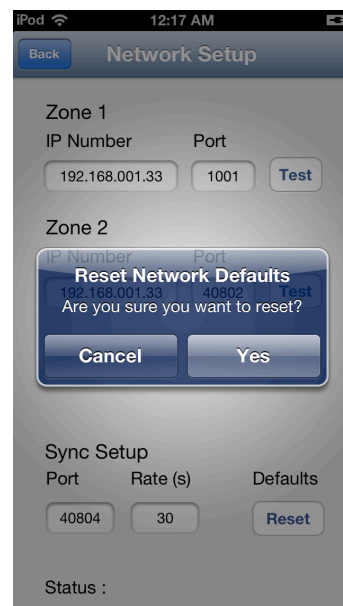
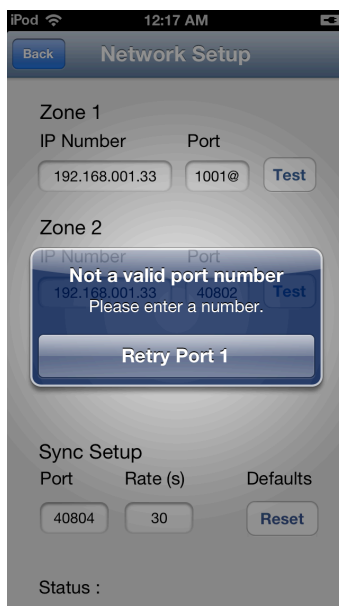
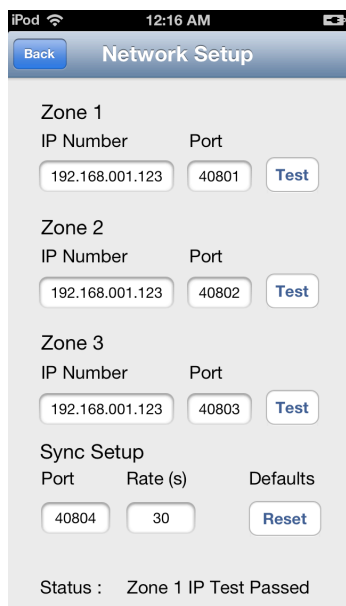
Setup Screen UI fields.

1. Done Button – Will bring you back to the Home screen.
2. More Button – Will bring you to the Network Setup screen.
3. Title Label Text Field – User settable Title for the Home screen.
4. Zone 1 Label Text Field – User settable Zone 1 Label for the Home screen.
5. Zone 2 Label Text Field – User settable Zone 2 Label for the Home screen.
6. Zone 3 Label Text Field – User settable Zone 3 Label for the Home screen.
7. Password Text Field – User settable password to allow Setup access. Default password is “ default “ (no quotes).
8. Label Defaults Reset Button – Will reset all above Labels to the default labels.

SA-232D User guide.

Setup Screen. Displayed after pushing More Button.

Below are screen shots of the SA-232D App Network Setup Screen on a 5th generation iPod Touch that is running iOS 6 .0. This would look similar on an iPhone 5.



Network Setup Screen UI fields.

1. Back Button – Will bring you back to the Setup screen.
2. Zone 1,2,3 IP Number Text Field – User settable IP Number for Zone 1,2,3. Must be set to agree with your Ethernet-to-RS232 adapter IP Number. Default is 192.168.001.123. Please see “Adapter Setup” for more information.
3. Zone 1,2,3 Port Text Field – User settable Network Port for Zone 1,2,3. Must be set to agree with your Ethernet-to-RS232 adapter Port Number. Default is 40801,2,3. Please see “Adapter Setup” for more information.
4. Test Button – One button for each Zone. Will send a network query to check if the IP number and Port are connected to a AV25-2-RS232 Amplifier.
5. Sync Port Text Field – User settable Network Port for multi-device sync. To sync between iOS devices, this number must be the set the same on all devices. Default is 40804. Please see “Adapter Setup” for more information.
6. Sync Poll Rate Text Field – How often to devices check for sync. Default is 30 seconds.
7. Defaults Reset Button – Will reset all above text fields to the default numbers.
8. Status area – Will display success or failure after pressing Test button.

SA-232D additional information -

Contact DSP Wireless Inc. at www.dspwi.com